

CTWATER®

QRM-CTwater

CTWATER® is a water-equivalent resin for clinical X-ray modalities with ± 5 HU to water in the range of 70 kV to 150 kV tube voltage.

CTWATER® is a proprietary resin which exhibits the same X-ray attenuation characteristics as liquid water in the range of 70 kV to 150 kV tube voltage. It is a very stable (solid) material and can be produced in a large amount and in many shapes with a high grade on homogeneity and uniformity.

CTWATER® is as well the basis of some of our popular phantoms, as the European Spine Phantom (ESP) or the Dual Energy Phantom. It is an established and widely used material for CT calibration purposes.

CTWATER®

- can be molded into arbitrary shapes
- exhibits long-term stability
- is used in a number of our phantoms *plus* - the correctness of the specified properties will be evaluated with state-of-the-art CT scanners and certified by our quality management.

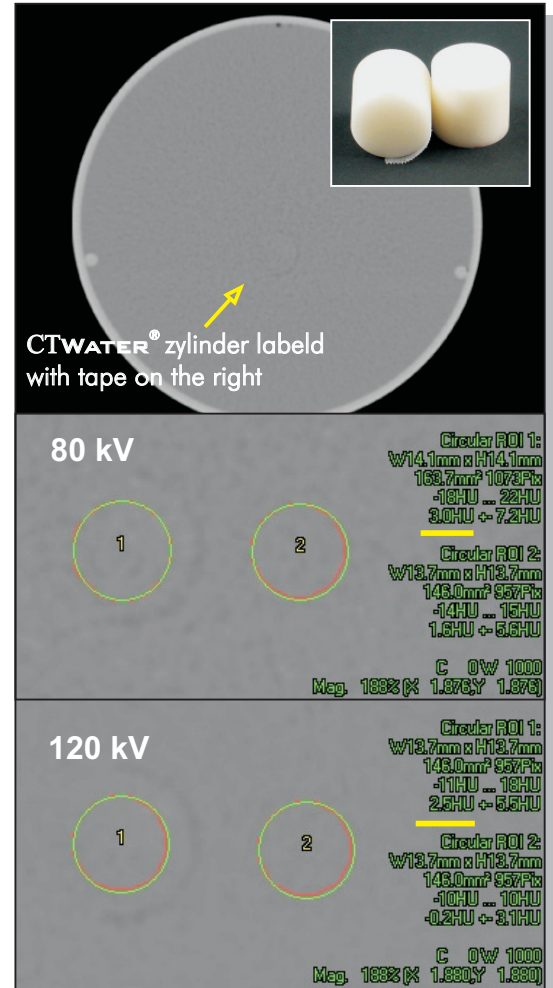
Please contact us if you are interested in that material: info@qrm.de

Specifications

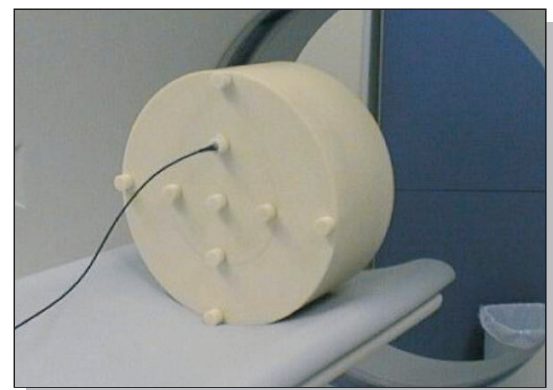
CTWATER®

typically 0 HU \pm 5 HU (\pm 3 HU)
 advanced 0 HU \pm 1 HU
 from 70 to 150 kV tube voltage
 $\rho = 1.03$ mg / ccm

Accuracy of CTWATER® depends on several parameters as area of application, quantity or shape.



CT-scan of a 20 mm CTWATER®-zylinder (1) in a 200 mm water basin at 80 and 120 kV. One half of the zylinder label with tape for better identification.



CTWATER® CTDI phantom for assessment of dose in CT